

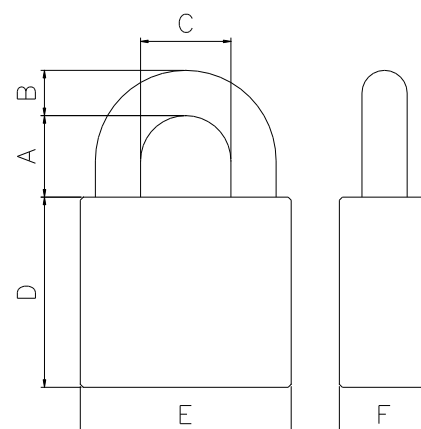


ANCHOR 960-3 Shared locking

A strong and weatherproof Grade 4 padlock designed for shared locking. This innovative padlock is designed as a lockable fitting with a sliding bolt and a fixed knob, making it easy and convenient to handle the locking for shared access. The design allows for controlled and secure use, which is particularly practical in situations where multiple parties share access to the same area, such as road barriers crossing or area gates where multiple parties need access.



- > Padlock body: 60mm hardened steel
- > Shackle: 11mm hardened steel
- > Plating: Chrome
- > Cylinder type: Fixed knob
- > Shackle heights: 28mm & 50mm
- > Classification:
 - Class 3 according to SSF 014 ver 4.
 - > Requires locking with 2 padlocks
 - SSF014 class 3
 - Grade 4 according to EN 12320:2021
 - > Requires locking with 2 padlocks
 - EN12320 grade 4
- > Options:
 - Loop
 - Padlock chain



A	B	C	D	E	F
28/50	11	24	54	60	25