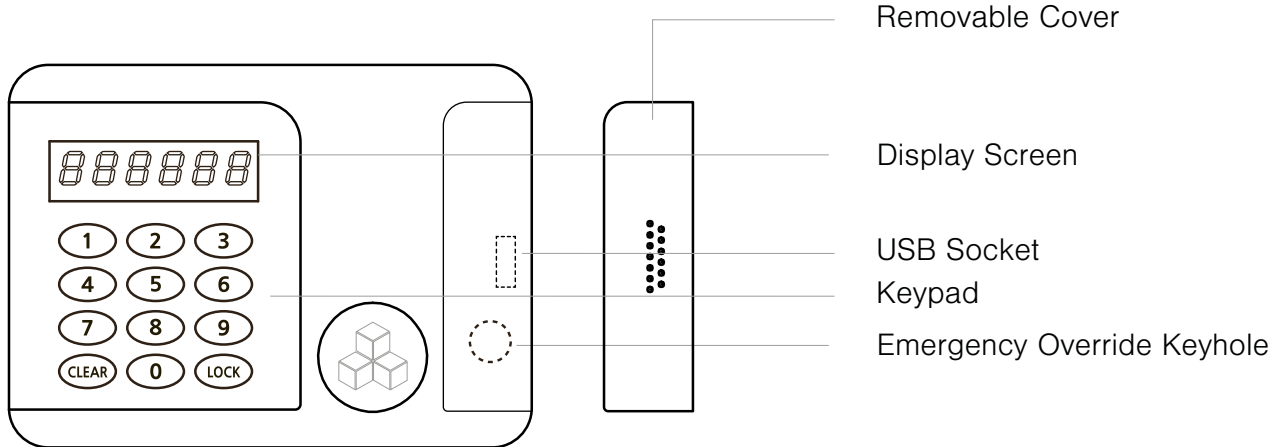




## KG Keyguard Key Safes

KG-38 KG-64 KG-100 KG-200

### ■ Digital Lock



### ■ On Screen Messages

*000000* : Input new password.

*000000* : The lock on your cabinet has opened.

*000500* : The lock on your cabinet has closed.

*888888* : Battery power levels are high.

*888800* : Battery power levels are low - you should install new batteries now!

*888888* : An incorrect user code has been input.

*888888* : Your cabinet lock has failed to open.

*888882* : Your cabinet lock has failed to close.

*888888* : Alarm is set.

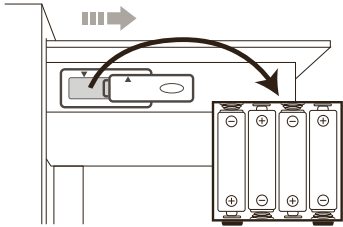
*888000* : Alarm has been deactivated.

*800885* : Your cabinet lock has entered a 5 minute lock out period.

## 1 Installing Batteries

Before using your key cabinet you will need to insert the 4 x AA batteries supplied.

1. Slide battery case cover on door top of safe to the right to take out the battery case.
2. Install batteries in compartment as illustrated.



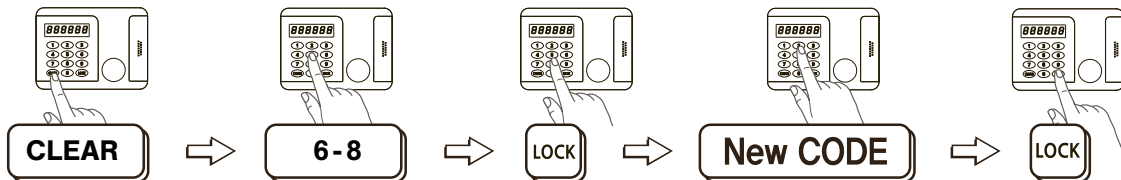
- Your key cabinet locking system has a nonvolatile memory, which means that it will remember your user code even if your batteries go flat.
- When pressing "#" button in closed state, **6888** or **6880** appears on LED display depending on battery power.
- When **6880** appears on LED display, please replace all batteries.

## 2 Setting the User Code

Only ever set your a new user code with the cabinet door in the open position.

1. Press the Clear button twice - **8888** will appear on the screen.
2. Now input the following keys consecutively: **6 - 8 - Lock**. **888** will appear on screen.
3. Input your new user code (**4 - 6 Digits**) followed by the **Lock** button.

Your new user code should now be set.



- Please check that your new user code was correctly programmed by testing the operation of your cabinet with the door in the open position.

## 3 Opening the Cabinet

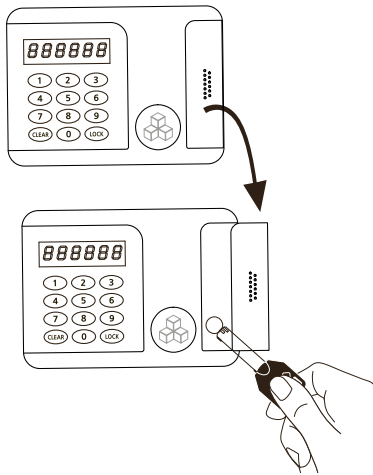
1. Input your user code (The factory default code is **1, 2, 3, 4**)
2. The lock will open and the word **OPENED** will appear on screen  
- now pull the cabinet door open.

- If an incorrect user code has been input the word **ERRRR** will appear on screen.
- Inputting an incorrect user code five times will block the lock for a five minute period - the display screen will show **RRRRR5**.  
Wait for five minutes and the input a correct user code.

## 4 Closing the Cabinet

1. Push the cabinet door into the closed position and press the **LOCK** button.
2. The cabinet lock will close automatically and the word **CLOSED** will appear on screen.

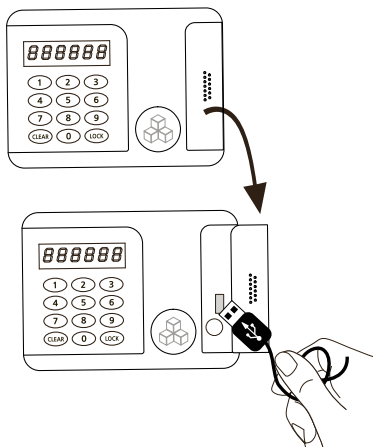
## 5 Opening the Cabinet with the Emergency Override Key



If you forget your user code, or your batteries are flat you can open the cabinet using the emergency override key.

1. Open the emergency override keyhole cover.
  2. Insert key and turn clockwise
- The emergency override key can only be removed with the lock in a closed position. Once you have gained entry to your cabinet, with the door in the open position turn the override key anticlockwise.
  - Please store your override keys safely outside of the cabinet.

## 6 Opening the Cabinet with Emergency Power Cable

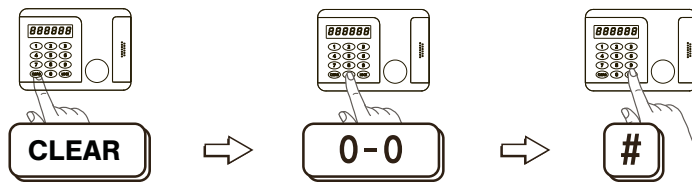


If your batteries are flat you can provide emergency power using the USB cable supplied – you will need a standard USB transformer too.

1. Open the emergency override keyhole cover.
2. Insert the USB cable into the USB socket.
3. Connect the USB cable to a USB transformer and turn on the power.
4. Open your cabinet using your normal user code and in the usual way.
5. Now install new batteries following the instructions detailed in Section 1.

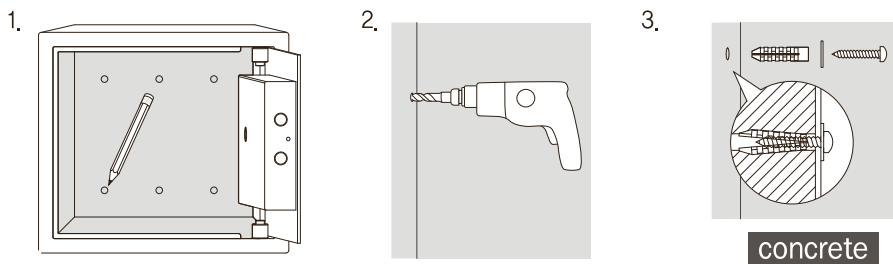
## 7 Activating and Deactivating the Motion Sensor Alarm

- When set the motion activated alarm will sound whenever the cabinet is moved, banged, impacted, or tilted.
1. Press the Clear button twice - **PEEE** will appear on the screen.
  2. Now input the following keys consecutively: 0 - 0 - Lock. **PEEEE** or **PEEEPE** will appear on screen, and your alarm is now active.



## 8 Fixing the Cabinet to a Wall

1. With the cabinet door open position it on the wall in the place you wish to install it, then mark the four fixing positions with a pencil.
2. Use a 6.5mm drill bit to prepare the four fixing holes.
4. Reposition the cabinet over the drilled holes, and then use the screws and washers to fix it to the wall.



Version 1 - P4 - 03/9/2024

